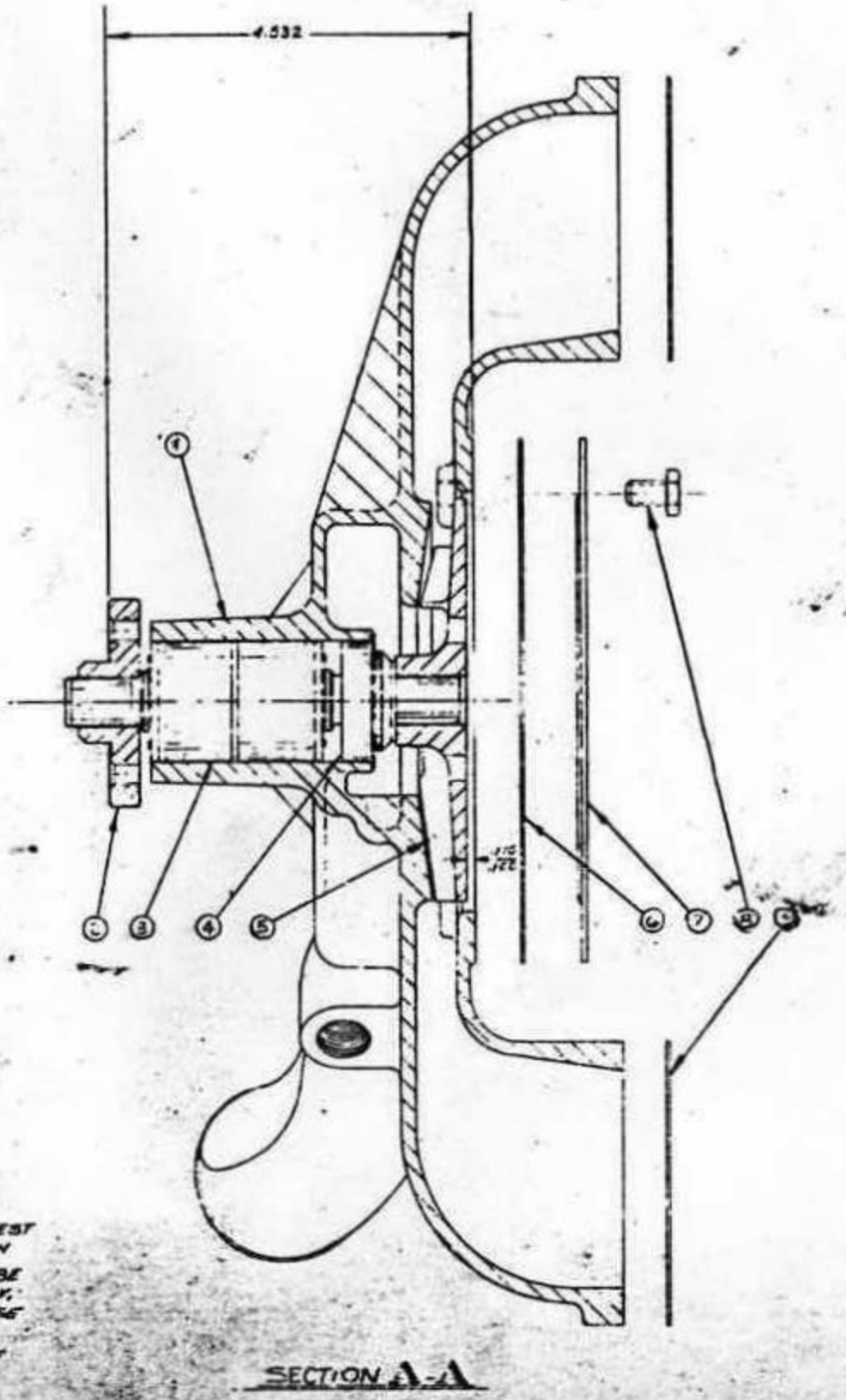
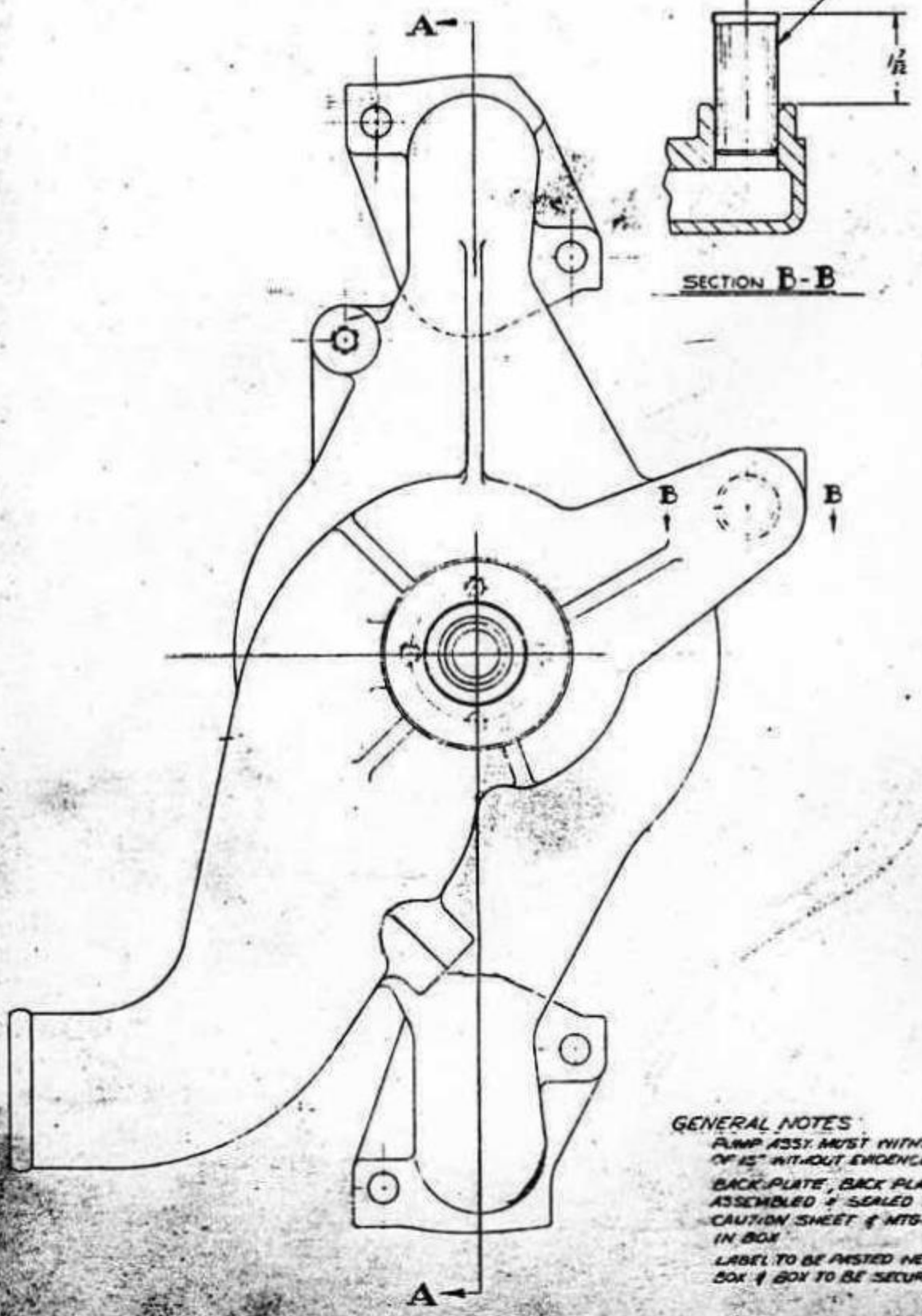


Tolerance
 unless otherwise specified
 Dimensions
 in inches
 unless
 otherwise
 specified
 All radii
 unless
 otherwise
 specified

| BILL OF MATERIAL | | | |
|------------------|---------------|----------|-------|
| QTY | PART NO. | MATERIAL | UNIT |
| 1 | BODY | 30378 | C.I. |
| 2 | HUB | 30380 | C.I. |
| 3 | BEARING ASSY. | WPROST | ASSY. |
| 4 | SEAL ASSY. | 30317 | ASSY. |
| 5 | IMPELLER | 30379 | C.I. |
| 6 | GASKET, B.P. | 30345 | PAPER |
| 7 | BACK PLATE | 30382 | STL. |
| 8 | SCREW, B.P. | 30342 | STL. |
| 9 | GASKET, MTS. | 30344 | PAPER |
| 10 | NIPPLE | 30340 | STL. |



GENERAL NOTES:
 PUMP ASSY. MUST WITHSTAND INTERNAL VACUUM TEST
 OF 15" WITHOUT EVIDENCE OF LEAKAGE AFTER RUN-IN
 BACK PLATE, BACK PLATE GASKET & SCREWS TO BE
 ASSEMBLED & SEALED WITH PERMATEX #3 OR EQUIV.
 CAUTION SHEET & MTS-GASKETS TO BE PLACED LOOSE
 IN BOX
 LABEL TO BE PASTED NEATLY & SECURELY TO END OF
 BOX & BOX TO BE SECURELY SEALED.

1953 T-BIRD, MERCURY & LINCOLN
 CRG. NO. 835-B501-B
 OEM-08352-A

WATER PUMP ASSEMBLY **CR564P**
 MASTER PARTS DIVISION
 ARTEX PRODUCTS INC.
 EMERSON, ILLINOIS